

HCLSoftware

CNC Programming for every machine on the shop floor with integrated or standalone options.



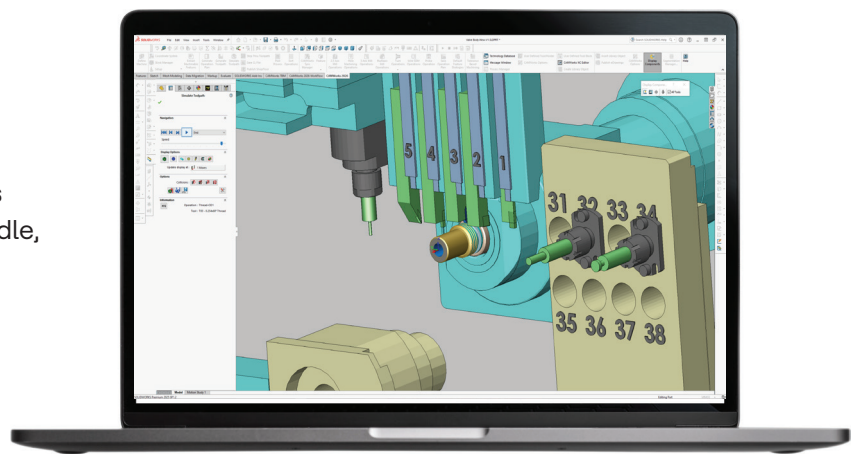
HCL CAMWorks

HCL CAMWorks 2026 is the latest release of HCL CAMWorks – powerful CAM software that saves time and boosts efficiency for CNC machining. HCL CAMWorks 2026 offers flexibility as a fully integrated CAD/CAM solution or as a standalone system.

Full integration with industry-leading CAD systems – including SOLIDWORKS®, 3DEXPERIENCE SOLIDWORKS®, and Solid Edge® – provides seamless workflows because CAD and CAM data for part files are saved in a single file, ensuring that toolpaths update automatically when design changes occur. CAMWorks 2026 adds functionality in direct response to customer requests, making the software even more powerful and easier to use. Below are some of the many improvements included in CAMWorks 2026.

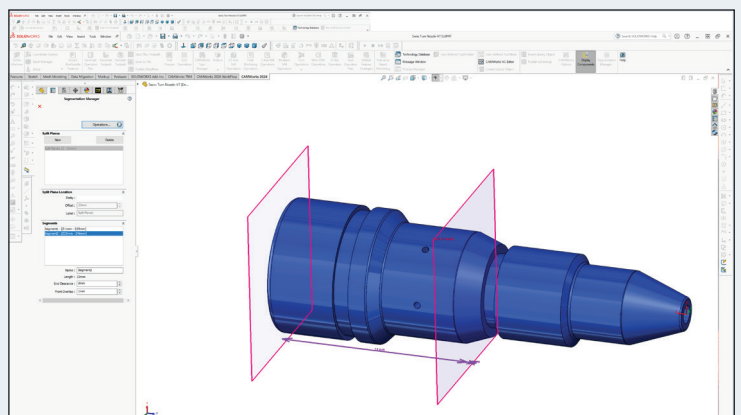
Support for Swiss Machining

- HCL CAMWorks now provides Swiss Machining functionality in Turning Premium and Ultimate products, with a user-friendly approach and powerful automation technologies.
- Supports industry-standard Swiss machine types and configurations – including main and subspindle, gang slide, turret, end working and back working tool posts.
- True G-code simulation with Virtual Machine, to prove out part programs, eliminate dry runs, avoid collisions, and extend machine life.



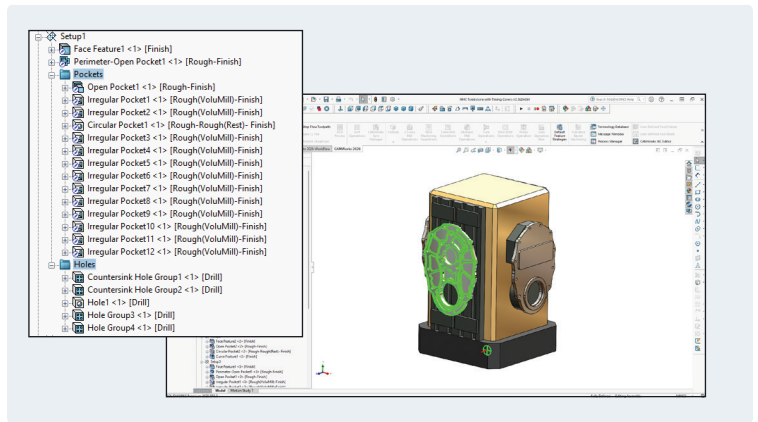
Innovative Segmentation Manager with Swiss Machining

- Automation for long parts machining where features must be divided into smaller toolpaths.
- User-defined parts segments for machining, which can be of various lengths.
- Once split planes are defined, toolpaths can be split with one click.
- Operations and toolpaths will update automatically if segments are changed.
- Supports overlap for machining, such as rough and finish turning operations.



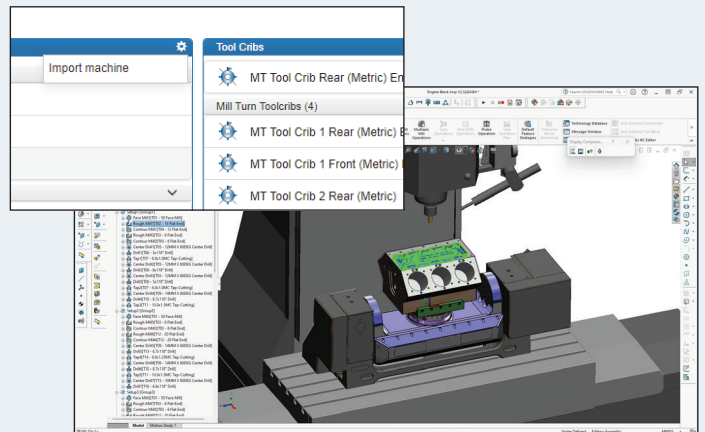
Enhanced Folders for Data Management with All HCL CAMWorks Products

- Users can create and name folders to easily organize data in tree views.
- Folders for operations, tools, and features.
- Ability to easily drag and drop items.
- Manages data for multiple segments.



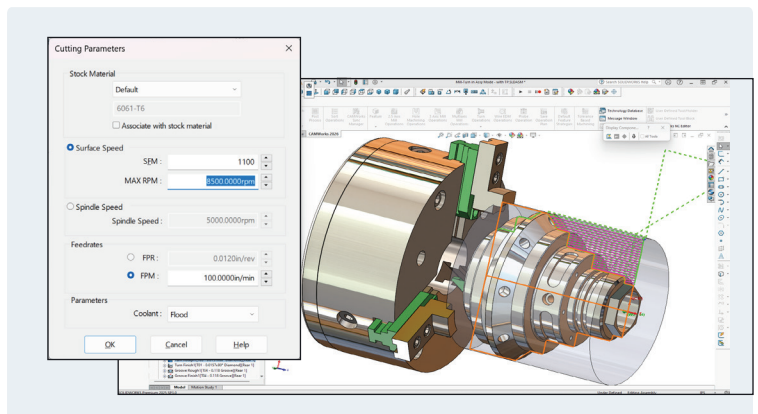
Import and Export Machine Data between Technology Databases (TechDBs)

- Easily transfer machine configurations between different TechDBs without needing to share the entire TechDB.
- Allows users to export one or more machines along with all their associated data – including tool cribs, tools, and default strategies – in a single file.
- Simplifies the process of setting up new workstations, standardizing machine definitions, and sharing configurations among users.



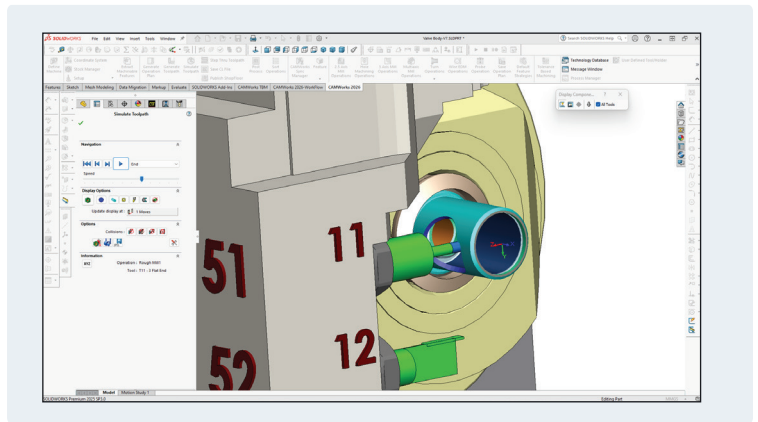
Cutting Parameters for Turn Inserts Based on Stock Material

- Cutting parameters for turn inserts can now be stored based on the material to be machined.
- Predefined feeds and speeds can be defined and edited in both the UI and the TechDB.
- A new Tool option has been added to the dropdown list on the F/S tab.
- A new cutting parameters button has been added to the insert tab within the CAMWorks UI.



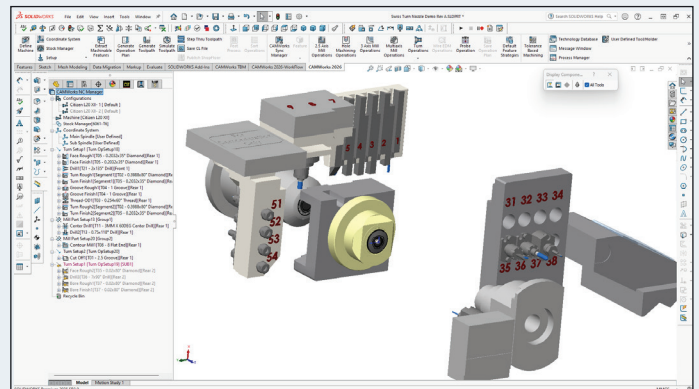
Display of Machine Kinematics during Toolpath Simulation

- The machine components can now be displayed during Toolpath Simulation.
- Machine simulation and collision detection are now supported directly in SOLIDWORKS and CAMWorks.
- Machine kinematics are supported for 3 and 4 axis milling machines, 2 and 4 axis turn, mill/turn, and Swiss-style machines.



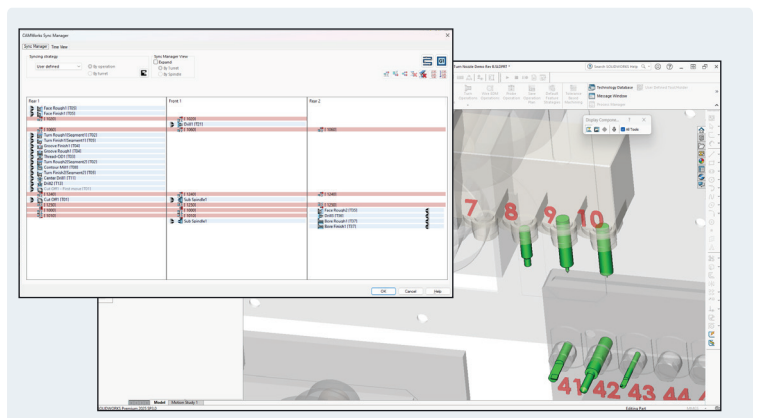
Machine Awareness Functionality Support For CNC Machines

- Provides the ability to display and replicate the physical CNC machine in CAMWorks while programming.
- Machine components and tooling are displayed, and tooling can be adjusted in real time.
- Machine awareness eliminates issues at the machine and reduces setup time.



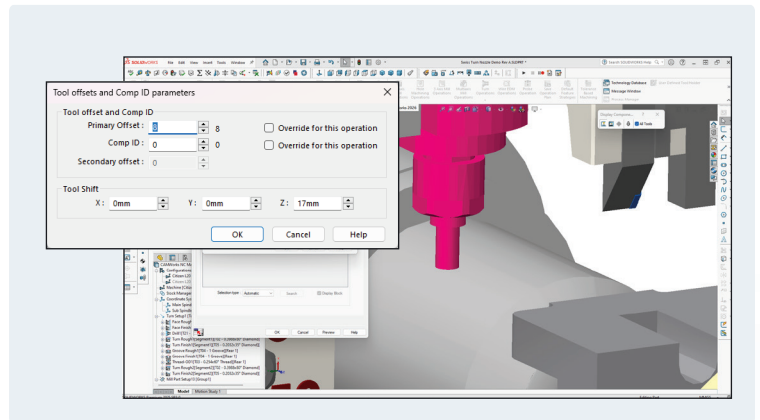
Expanded Sync Manager View for CAMWorks Sync Manager

- The Sync Manager has been expanded to include views by turret or by spindle.
- Drag and drop operations within the Sync Manager to easily synchronize operations to occur simultaneously on the main and subspindle.
- Insert timing or wait codes with precise control over when they will occur in the G-code.



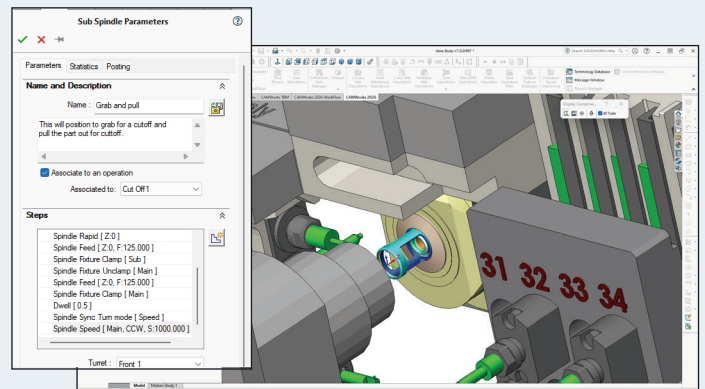
Option to Assign Tool Offset, Compensation IDs, and Tool Shift Parameters

- Allows the user to assign tool offsets, compensation IDs, and tool shift distances for each tool station.
- Primary and secondary tool offsets and compensation IDs can now be specified within the CAMWorks UI.
- Tool shift distances can also be assigned.



Associating Sub Spindle Operations with other Operations to ensure Auto-Synchronization

- The Sub-spindle parameters UI now includes an option to associate the sub-spindle operation with another operation.
- Sub-spindle operations that are associated with other operations will occur simultaneously with the associated operation.



HCL CAMWorks

For more information:

Email: camworks.inquiries@hcl.com

Website: <https://www.camworks.com>

Phone Numbers:

Us: +1.480.367.0132

Europe: +49.1727874221

APAC: +91.22.67056715 / +91.94.23004902

About HCLSoftware

HCLSoftware is a global leader in software innovation, dedicated to powering the Digital+ Economy. We develop, market, sell and support transformative solutions that combine and integrate experience, data, and operations, delivering on a bold, AI-driven vision of the Digital+ future. Built on a rich heritage of pioneering spirit and unwavering commitment to customer success, we deliver best-in-class software products that empower organizations to achieve their goals. Our core values of integrity, inclusion, value creation, people-centricity and social responsibility guide everything we do. HCLSoftware serves more than 20,000 organizations, including a majority of the Fortune 100 and almost half of the Fortune 500. 1/04/26

<https://www.hcl-software.com/>

HCLSoftware

[hcl-software.com](https://www.hcl-software.com/)