

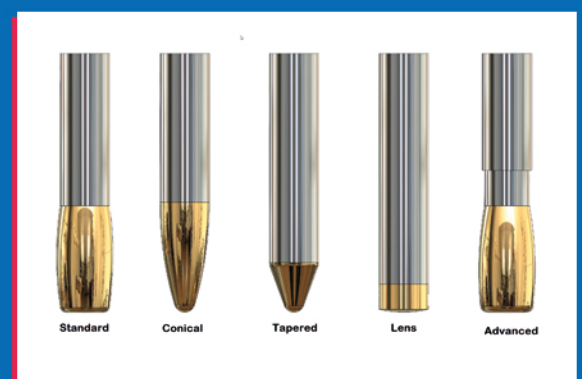
What's new in CAMWorks 2022



HCL CAMWorks 2022 is advanced CAM software that provides the technology and automation tools to achieve Smart Manufacturing objectives. CAMWorks reduces programming time with feature recognition, knowledge-based technology and full integration to industry-leading CAD systems. It also increases productivity with TechDB™, tolerance-based machining and high-performance toolpath generation. With HCL CAMWorks 2022 you can program smarter and machine faster.

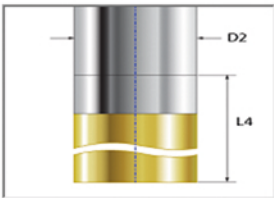
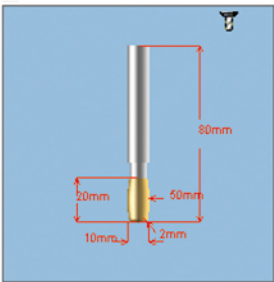
Barrel Tool Support for Milling Operations

- Provides better surface finish with barrel tools for finishing operations
- Support for standard, conical tangent, tapered, lens and advanced user-defined barrel tools
- Support for multi-axis milling and 3 axis milling operations



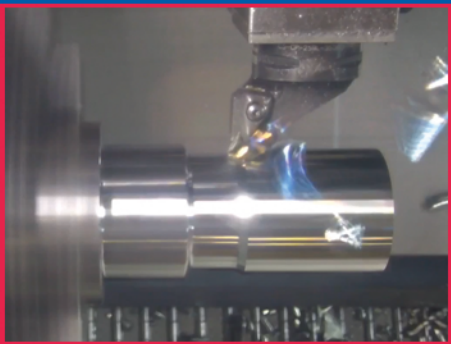
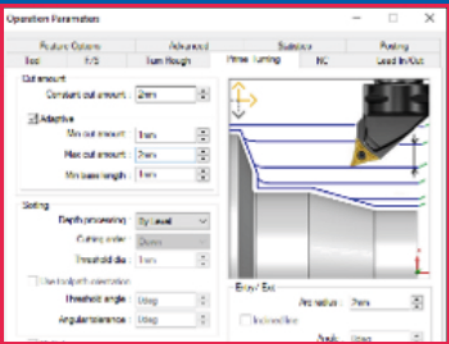
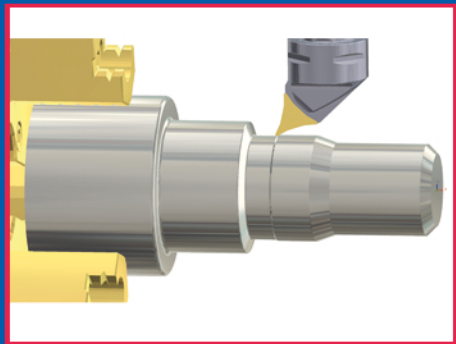
Barrel Tools in the TechDB™

- Ability to view, edit and save barrel tools using the Barrel Tool interface
- Max diameter and corner radius options
- Notification if tool geometry falls outside parameters
- Barrel tools can be filtered, identified and added to tool cribs



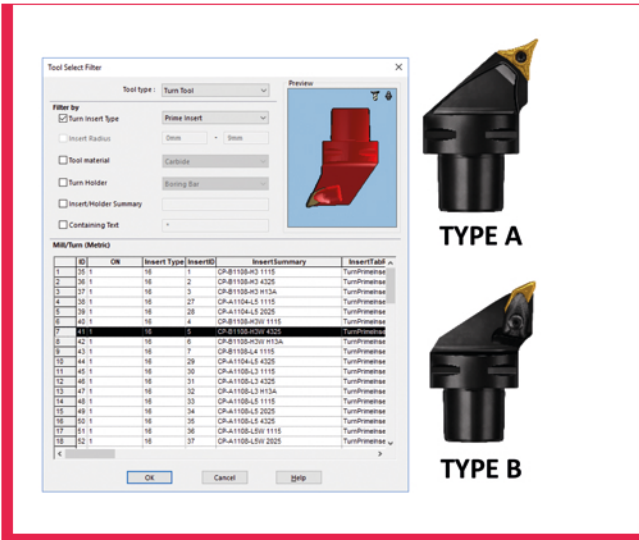
PrimeTurning™ from Sandvik Coromant

- One of the first integrated CAM systems to add support for PrimeTurning™ inserts and holders
- Reduced cycle time for turning by 50% or more
- Increased insert tool-life by 500% or more
- Full toolpath support for turning in the unique PrimeTurning™ directions



PrimeTurning™ Tool Library

- Majority of the PrimeTurning™ inserts offered by Sandvik Coromant are available with CAMWorks Technology Database or TechDB™
- Includes both type A and B PrimeTurning™ inserts
- Easily accessible directly inside the patented CAMWorks Technology Database
- Library of over 85 unique PrimeTurning™ tools
- Filter exclusively for quickly locating PrimeTurning™ inserts and tools



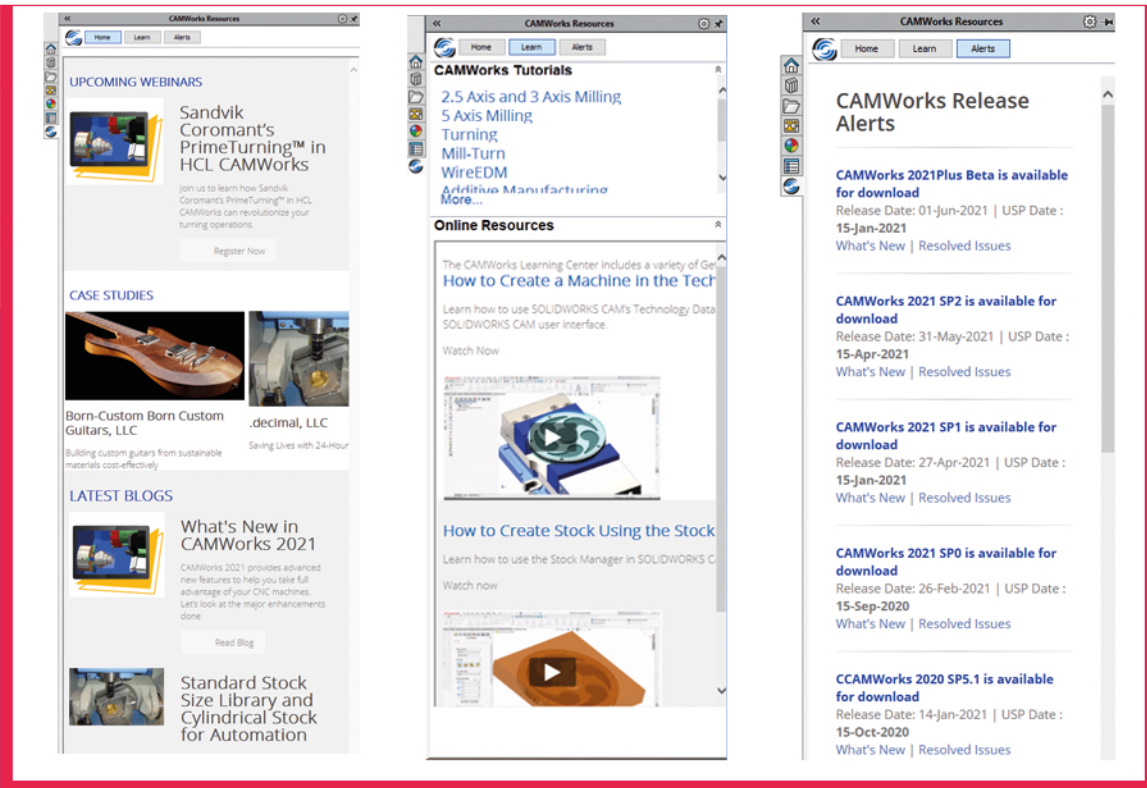
TYPE A



TYPE B

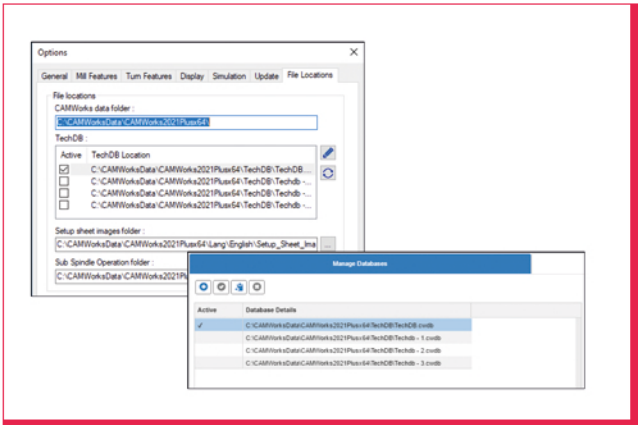
CAMWorks Task Pane UI

- Get the latest news from CAMWorks
- Gain easy access to tutorials and the learning center
- Get real-time alerts on important product updates, releases, and collateral
- Use browser controls and website access

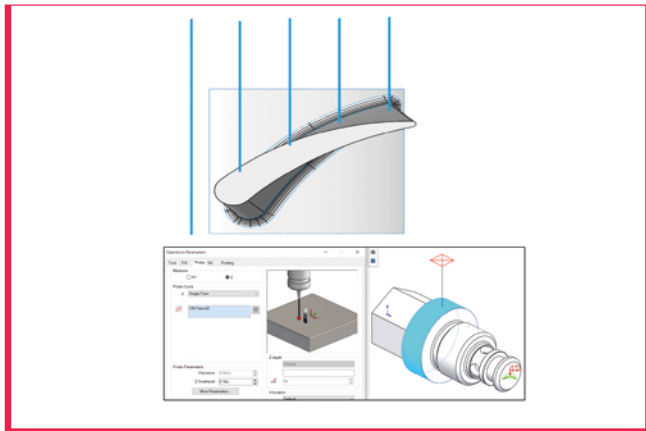


Ability to Use Multiple Technology Databases

- New capability to use multiple TechDBs
- Customize each TechDB for specific machine types or manufacturing applications
- Create a selectable list of available TechDBs
- Easily select the TechDB using CAMWorks options



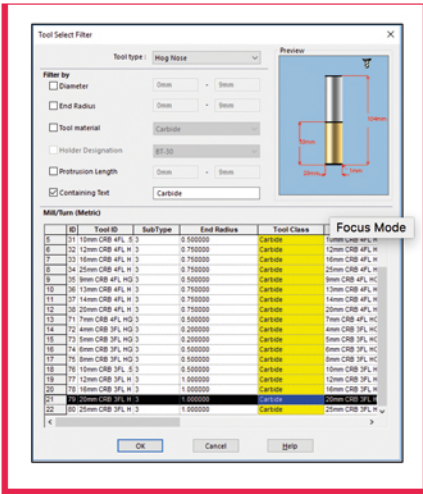
Z-level Probing Support for Non-Planar Surfaces



- Ability to probe points on a surface and select non-planar surfaces during Z axis probing operations
- By default, the highest point on the surface will be selected
- Multiple cycles can be created to probe at various points along the surface in milling, turning or mill/turn parts

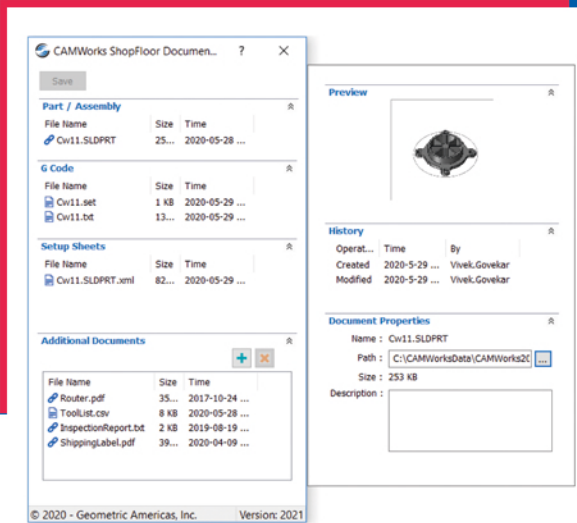
Option for Filter Milling and Turning Tools or Assemblies Using Text Strings

- A new search parameter of text string is introduced in CAMWorks 2022
- Users can search for tools using any customized text
- Quickly filter tools located in the library

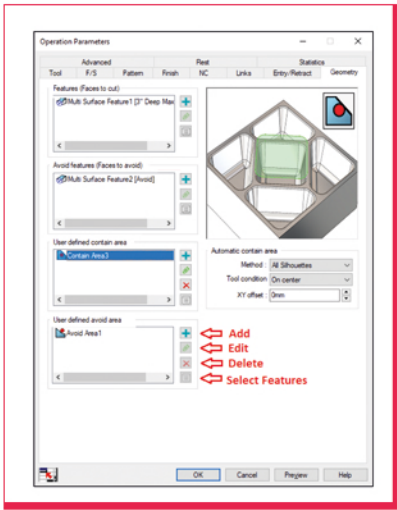


Document Manager in CAMWorks ShopFloor

- Allows users to add, review and remove documents of almost any type to the ShopFloor file, without the need for a full ShopFloor license
- Ideal for departments outside of manufacturing, such as purchasing or finance, to add files to the CAMWorks ShopFloor files
- Links to added files are created for tracking purposes and a history of changes is provided
- Protects users design IP and internal data



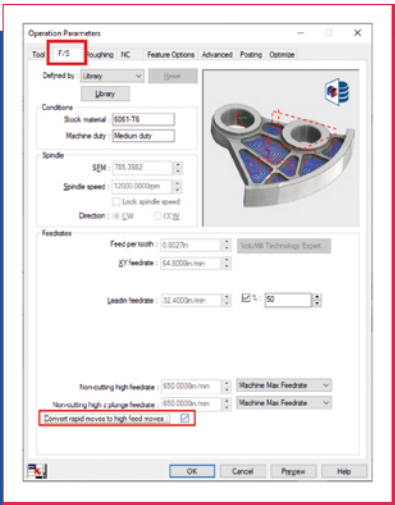
Geometry Tab for 3 Axis Operations Workflow



- New geometry tab in 3 Axis Operations to improve workflow and save time
- Provides the ability to edit the multi-surface feature being machined, create avoid features (faces to avoid), contain areas and avoid areas
- Options can be added, edited and/or deleted and features can be selected within the geometry tab, removing the need to go back to the feature tree each time

Added VoluMill Enhancements

- Option to convert rapid moves to high-feed moves to significantly reduce shaking of the machine and make smooth movements between toolpaths
- Option to convert arc moves to line moves, with the ability to specify a deviation value



About CAMWorks

CAMWorks is an intuitive CAM software combining production-proven feature based CAM technology, automatic feature recognition, and rules based machining along with tolerance based machining to leverage MBD and PMI technology to automate Smart Manufacturing for CNC programming – paving the way to advanced digital manufacturing.

For more details, please visit www.camworks.com or contact camworks.inquiries@hcl.com



www.hcltech.com

HCL Technologies (HCL) empowers global enterprises with technology for the next decade today. HCL’s Mode 1-2-3 strategy, through its deep-domain industry expertise, customer-centricity and entrepreneurial culture of ideapreneurship™ enables businesses to transform into next-gen enterprises.

HCL offers its services and products through three lines of business - IT and Business Services (ITBS), Engineering and R&D Services (ERS), and Products & Platforms (P&P). ITBS enables global enterprises to transform their businesses through offerings in areas of Applications, Infrastructure, Digital Process Operations, and next generation digital transformation solutions. ERS offers engineering services and solutions in all aspects of product development and platform engineering while under P&P. HCL provides modernized software products to global clients for their technology and industry specific requirements. Through its cutting-edge co-innovation labs, global delivery capabilities, and broad global network, HCL delivers holistic services in various industry verticals, categorized under Financial Services, Manufacturing, Technology & Services, Telecom & Media, Retail & CPG, Life Sciences, and Healthcare and Public Services.

As a leading global technology company, HCL takes pride in its diversity, social responsibility, sustainability, and education initiatives. As of 12 months ending on September 30, 2021, HCL has a consolidated revenue of US\$ 10.82 billion and its 187,634 ideapreneurs operate out of 50 countries. For more information, visit www.hcltech.com